

7-080 Quarter-Turn Pr20.1 L18

Tool operable, IP65/IP67, Stainless Steel, Optional pre-assembly

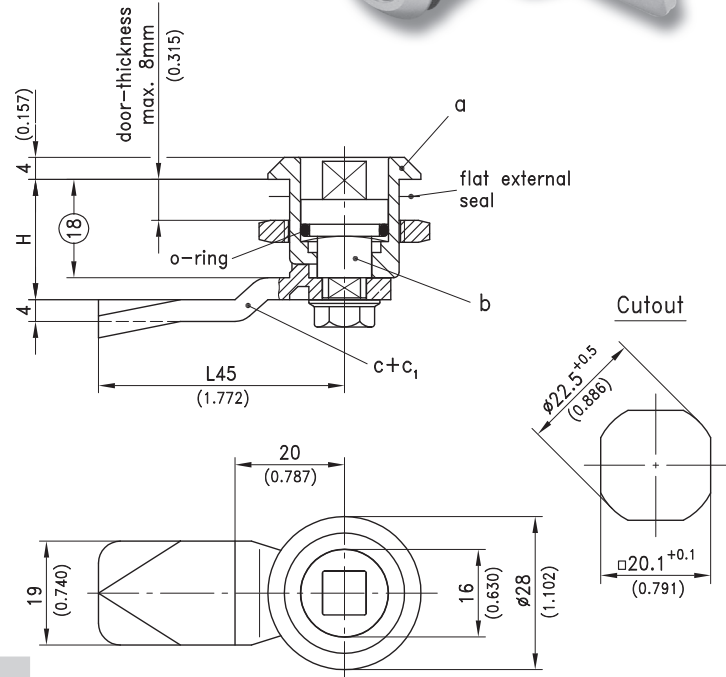
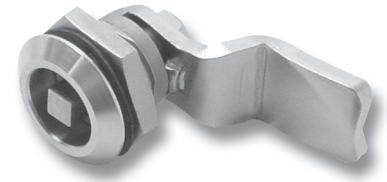


Product Notes:

- Water and dust tight according to IP65, DIN EN 60529
For IP67 use additional O-Ring 10x2mm
- RH and LH application
- Quarter-Turn consists of three components which are combined to fit application
- Components can be pre-assembled by DIRAK upon request
- Pre-assembled Quarter-Turn can be installed in cutout
- Zinc die - see Product System 1-100 and 1-100.01
- Tool-less installation - see Product System 1-082SL and 1-083SL
- Other stainless steel - see Product System 7-080.01

Material:

- **Housing:** Stainless Steel AISI 316L or PA, Black
- **Insert:** Stainless Steel AISI 316L or PA
- **Cam:** Stainless Steel AISI 304
- **Grounding nut:** Stainless Steel AISI 316L
- **Grounding clip:** Stainless Steel AISI 316



	See Page
a) Housing with single sided grounding nut (Stainless Steel) and flat external seal	200-9043
PA with nut (Stainless Steel)	200-9044
PA with grounding clip	200-9064
b) Insert with screw, wave washer and O-ring	
Square 6mm	200-9146
Square 7mm	200-9119
Square 8mm	200-9120
Triangular 7mm	200-9121
Triangular 8mm	200-9122
Double bit 3mm	200-9123
Double bit 5mm	200-9124
Slotted 2x4mm deep	200-9151
Star knob with Stainless Steel core/insert with PA knob	200-9125
Wing knob with Stainless Steel core/insert with PA knob	200-9179
7/16" hex.	200-9192
Socket hex. 8 mm (5/16")	200-9195
Socket hex. 8 mm (5/16"), with pin	100-9118
IP67 through additional	
e1) O-ring 10x2mm	200-1002
e2) Key for insert	10.18, 10.20
e3) Dust cap and finger pull	01.106

c) Cams		
L45mm/1.772	H in mm/inch	
6 / 0.236		200-0506
8 / 0.315		200-0508
10 / 0.394		200-0510
14 / 0.551		200-0514
16 / 0.630		200-0516
18 / 0.709		200-0518
20 / 0.787		200-0520
22 / 0.866		200-0522
24 / 0.945		200-0524
26 / 1.024		200-0526
28 / 1.102		200-0528
32 / 1.260		200-0532
50 / 1.969		200-0550
c1) Cams		
L35mm/1.378	H in mm/inch	
20 / 0.787		200-4535.00-00020
22 / 0.866		200-4535.00-00022
d) Assembling of cam, with O-ring		
		200-0002